



Heybridge Drive, Ilford, IG6

BUTLER & STAG



**Guide Price £450,000 - £500,000**  
**- Open Day The 19th September**

**-**  
**A fantastic opportunity to apply your own stamp on this lovely family three bedroom mid terraced home situated near Barkingside High Street, the property has been enjoyed by the same family for over 60 years.**



## Freehold

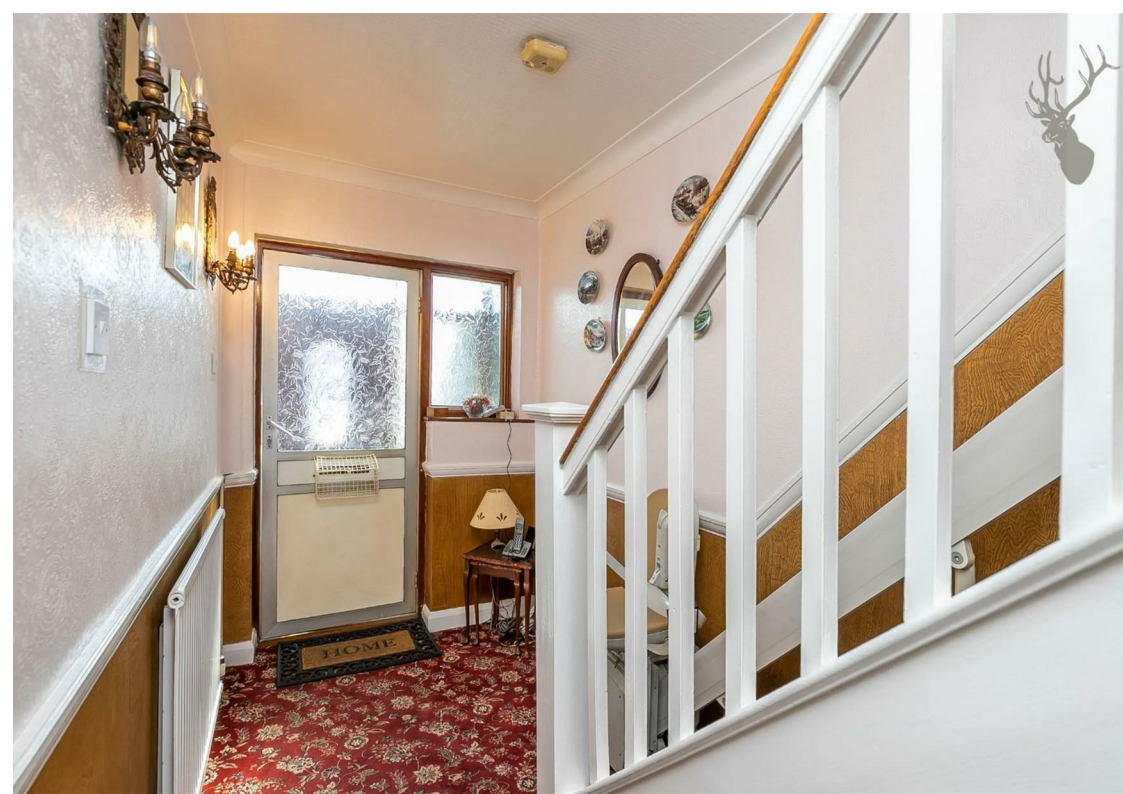
- Mid Terraced Family Home
- Three Bedrooms
- Separate Dining Room
- Conservatory
- Off-Street Parking For Two Cars
- Chain Free

Spanning just over 980 sq ft the property offers a good amount of living space throughout with the ground floor comprising of a spacious lounge, a separate dining room/ a galley kitchen with doors leading through to a bright and airy conservatory. To the first floor there's three bedrooms all alongside a family bathroom.

Externally, to the rear is a charming and well presented south west facing garden expanding over 52 ft. To the front there's a fully block paved driveway which offers off-street parking for two vehicles.

Heybridge Drive is located within easy access to Barkingside Central Line Station which offers a direct route into Liverpool Street within 29 minutes and only 38 minutes into Oxford Circus, as well as being situated just seconds walk from several bus routes to Hainault, Ilford and Romford. Barkingside High Street is a few minutes walk from the property with a range of shops including two supermarkets. The property is also well located for access to Fairlop Waters and Hainault Forest Country Park which offer picturesque scenery across into London. The property is an excellent position for local schools, including Avanti Primary School and King Solomon High School which are both within a few minutes walk. Mossford Green Primary School is also within easy walking distance along with Ilford County High School.



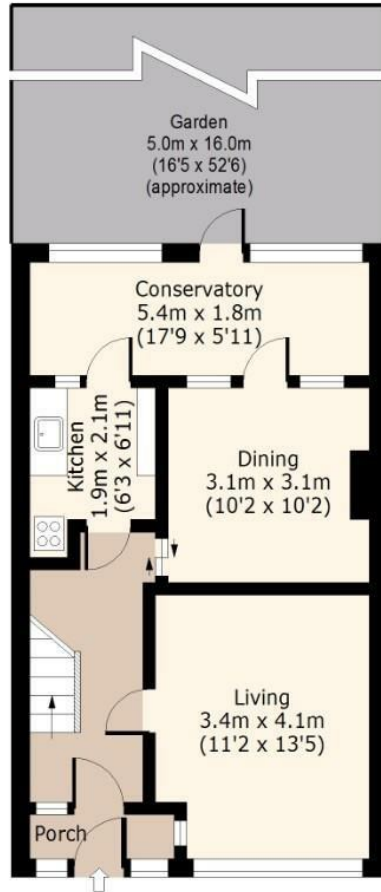


# Heybridge Drive



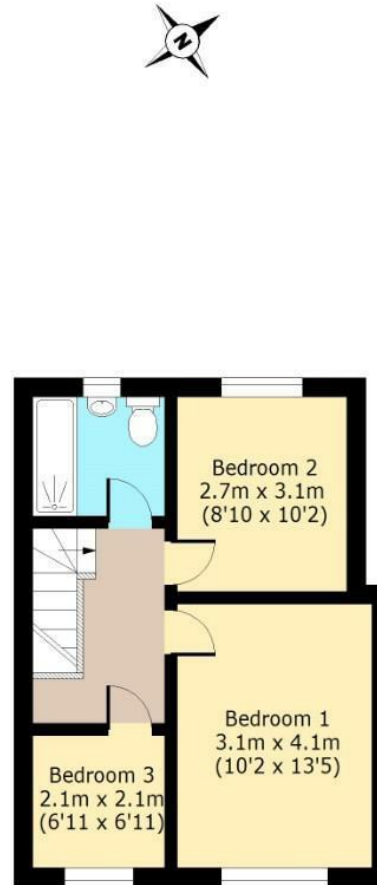
## Ground Floor

Approx. 51 Sq. meters (549 Sq. feet)



## First Floor

Approx. 39 Sq. meters (420 Sq. feet)



Total area: approx. 90 Sq. meters (969 Sq. feet)

For illustration purposes only - not to scale

[www.lpaplus.com](http://www.lpaplus.com)

IMPORTANT NOTICE - These particulars have been prepared in good faith and they are not intended to constitute part of an offer or contract. We have not performed a structural survey on this property and the services, appliances and specific fittings have not been tested. All photographs, measurements, floor plans and distances referred to are given as a guide and should not be relied upon.

# BUTLER & STAG

☎ 01992 667666

🏠 4 Forest Drive, Theydon Bois, Essex, CM16 7EY

✉ [theydon@butlerandstag.com](mailto:theydon@butlerandstag.com)

[www.butlerandstag.uk](http://www.butlerandstag.uk)